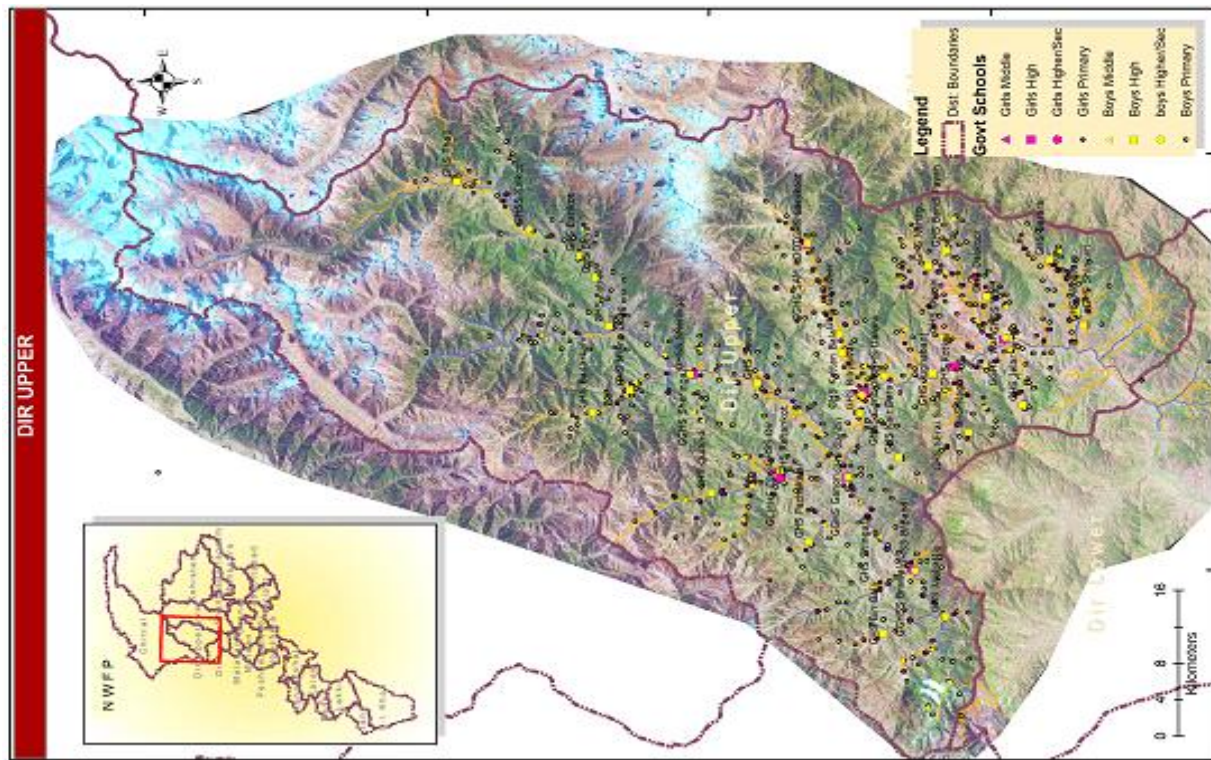


Dir Bala

Assessment of teacher distribution and need. 2009-2010 through 2014-2015.



Dir Bala 2009 - 2010

(EMIS Data)

	Primary classes (Kachi - 5)	Middle classes (6 - 8)	High classes (9 - 10)
Boys Schools			
# Pupils	87,110	14,888	5,972
# Teachers	1,740	626	189
PTR	50.1	23.8	31.7
Payroll (Rs. Millions)	196	81	39
Girls Schools			
# Pupils	34,485	4,324	1,199
# Teachers	650	133	23
PTR	53.1	32.5	52.5
Payroll (Rs. Millions)	73	17	5

Dir Bala 2014 - 2015

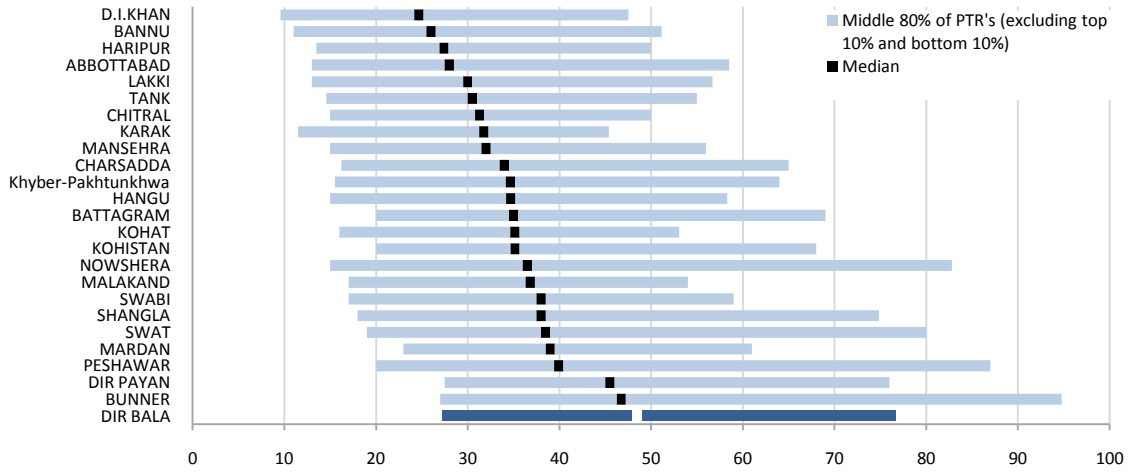
(Projected Data)

	Primary classes (Kachi - 5)	Middle classes (6 - 8)	High classes (9 - 10)
Boys Schools			
# Pupils	106,763	26,703	7,604
# Teachers	2,133	1,123	240
PTR	50.1	23.8	31.7
Payroll (Rs. Millions)	240	146	50
Girls Schools			
# Pupils	34,645	9,372	1,952
# Teachers	653	289	37
PTR	53.1	32.5	52.5
Payroll (Rs. Millions)	74	37	8

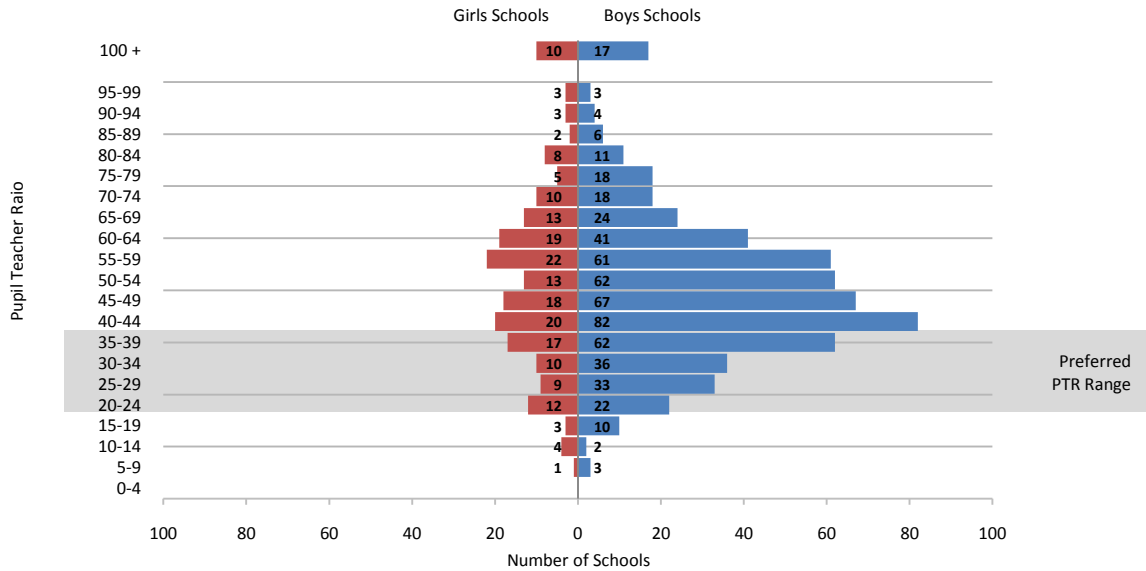
Data are illustrative only and should not be used for planning purposes

Assessment of Primary School Pupil-Teacher Ratios in Dir Bala

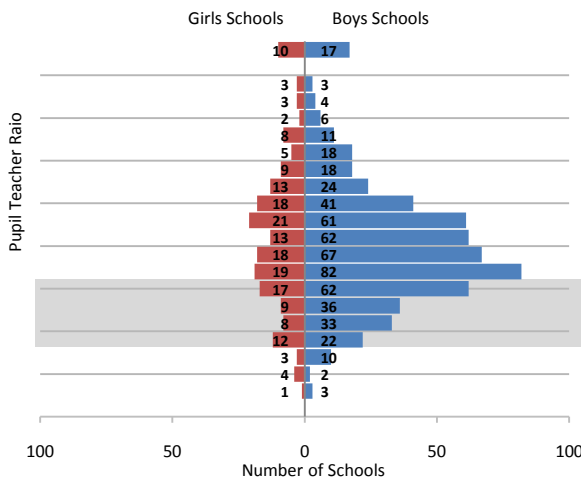
Distribution of Primary Schools by PTR in Dir Bala as compared to other districts



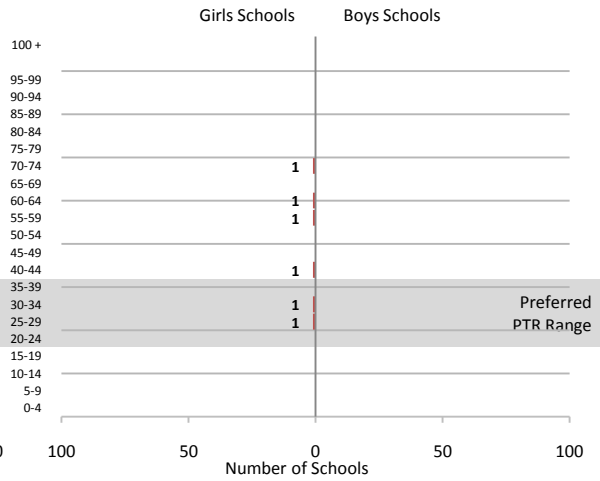
Distribution of Primary Schools by PTR within Dir Bala



Rural Primary Schools



Urban Primary Schools



Data are illustrative only and should not be used for planning purposes

Assessment of Primary School Pupil-Teacher Ratios in Dir Bala

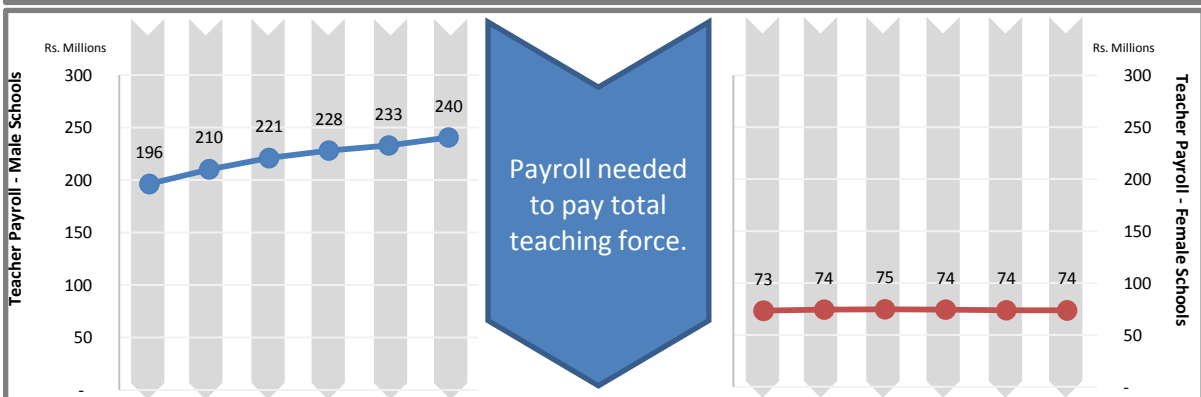
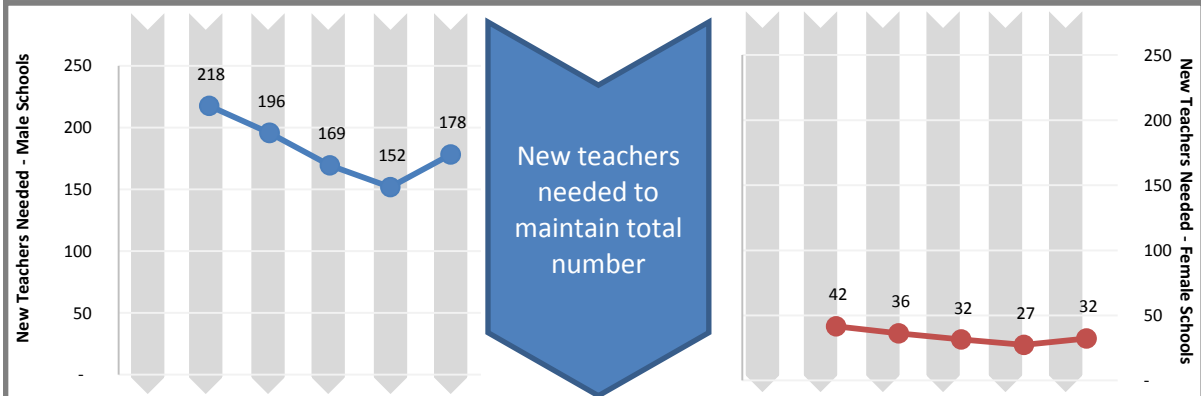
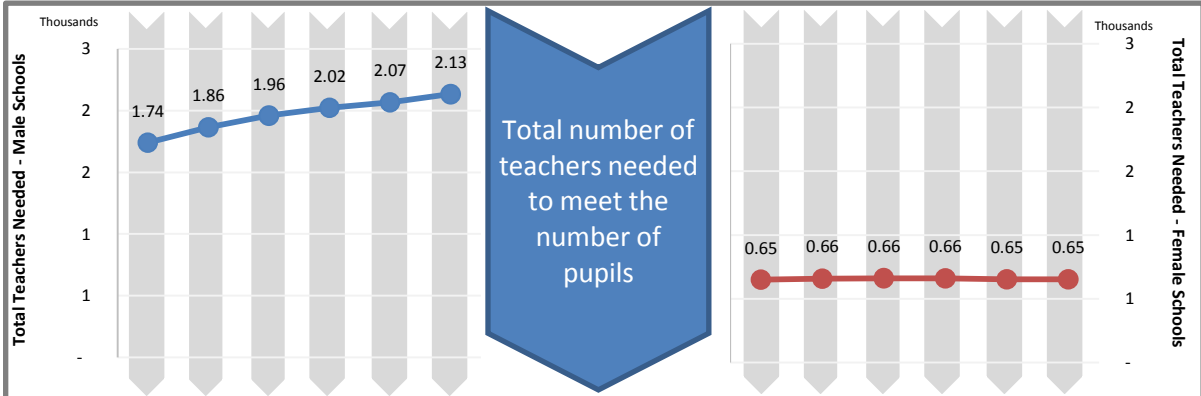
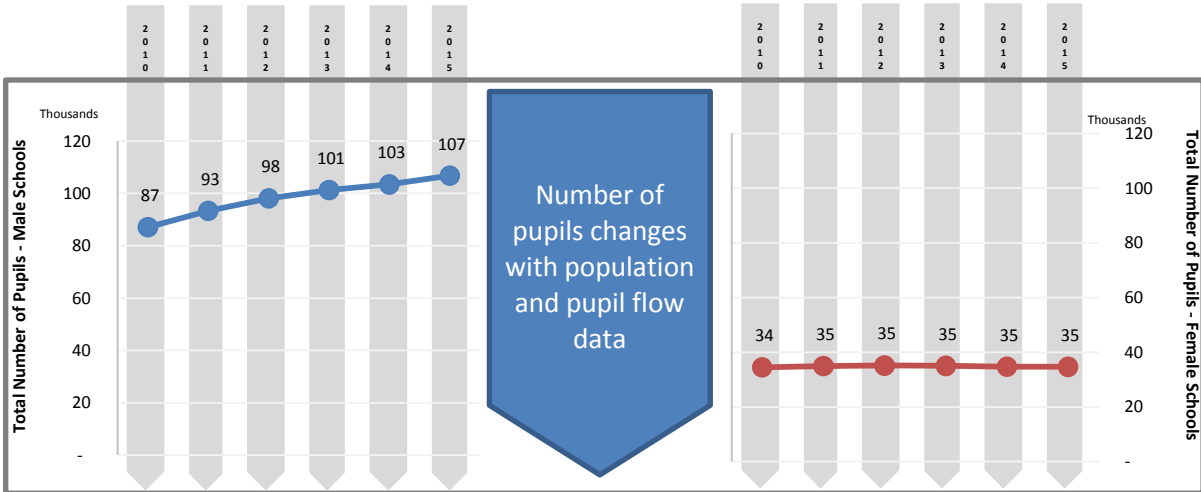
This page is reserved for Department of Education analysis and commentary regarding the contents of the adjacent page.

Data are illustrative only and should not be used for planning purposes

Projected Pupils, Teachers, and Teacher Payroll
Dir Bala - Primary Schools

Male Schools

Female Schools



Projected Pupils, Teachers, and Teacher Payroll
Dir Bala - Primary Schools

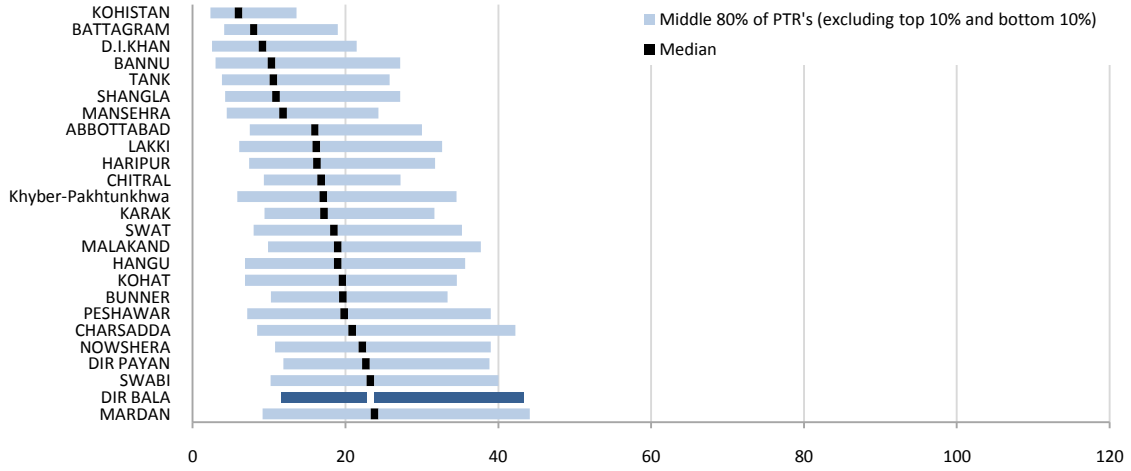
This page is reserved for Department of Education analysis and commentary regarding the contents of the adjacent page.

Projections shown on the adjacent page are based on the default constant-rate scenario. They do not reflect any educated adjustments to the model, and they are not endorsed by the Department of Education.

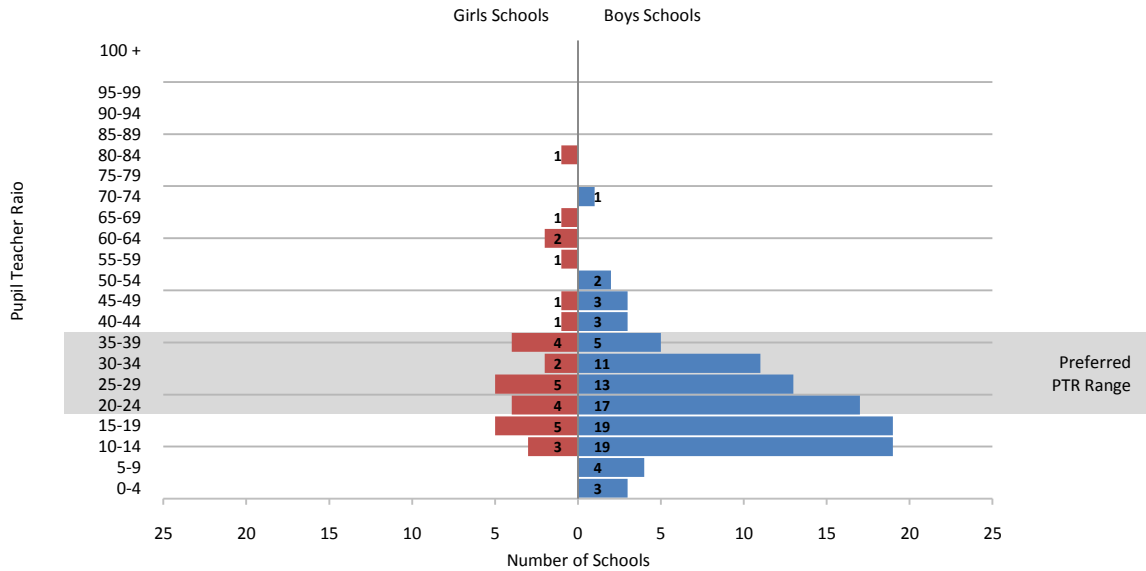
Data are illustrative only and should not be used for planning purposes

Assessment of Pupil-Teacher Ratios in Dir Bala schools offering middle-school-level classes
 (Includes MS, HS, and HSS schools offering middle-level classes)

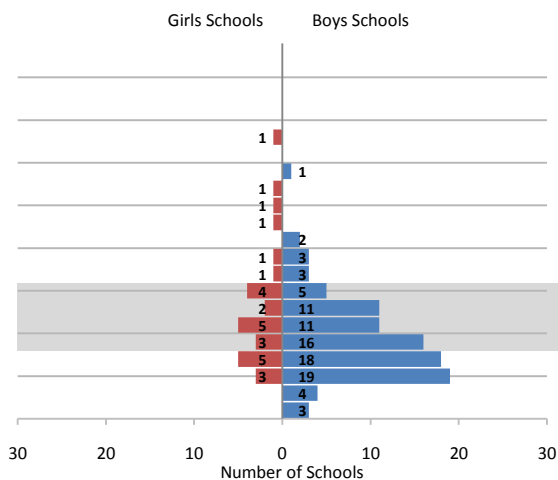
Distribution of Middle-level PTR's in Dir Bala as compared to other districts



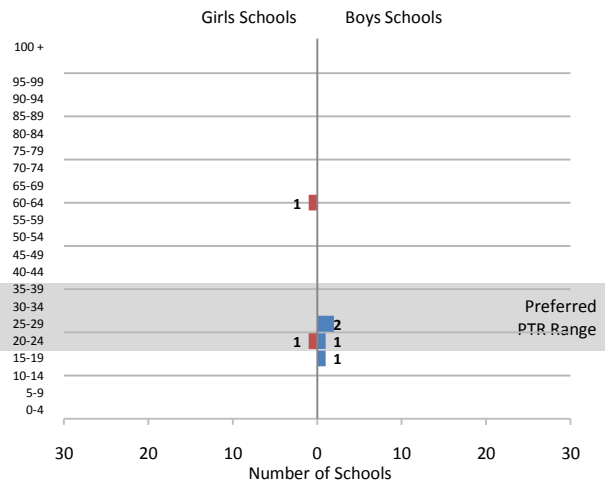
Distribution of Middle-school-level PTR's within Dir Bala



Rural Middle-school-level PTR's



Urban Middle-school-level PTR's



Data are illustrative only and should not be used for planning purposes

Assessment of Pupil-Teacher Ratios in Dir Bala schools offering middle-school-level classes

(Includes MS, HS, and HSS schools offering middle-level classes)

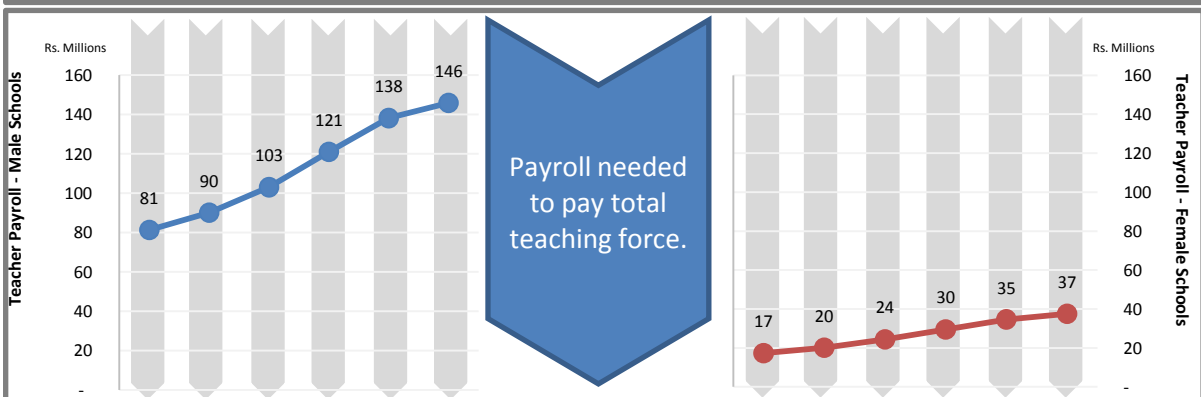
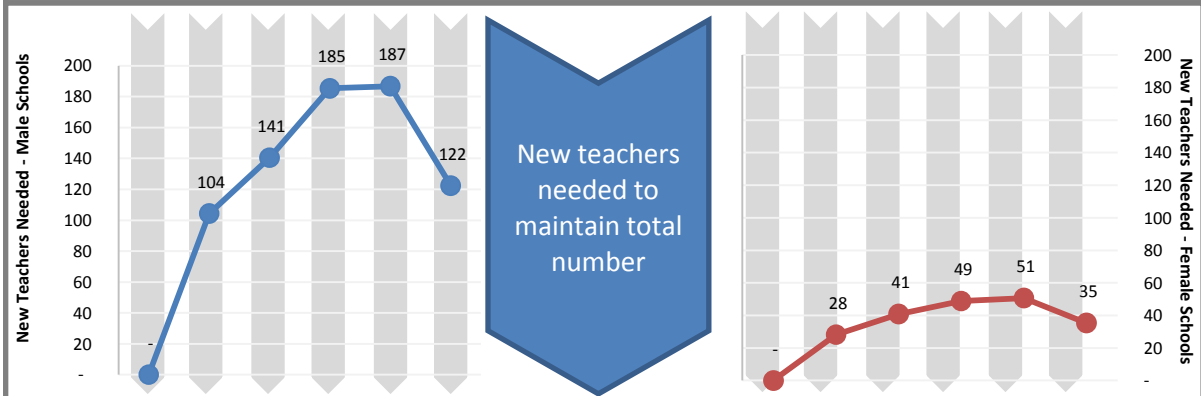
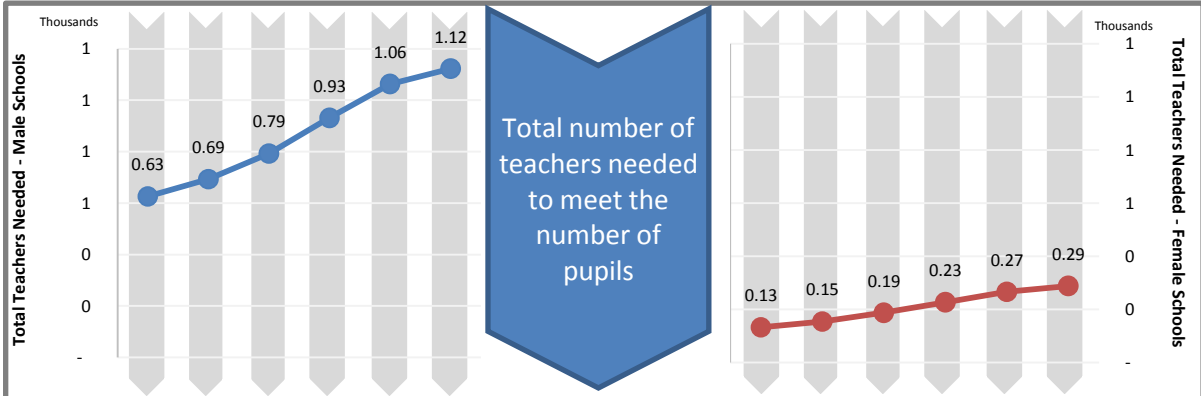
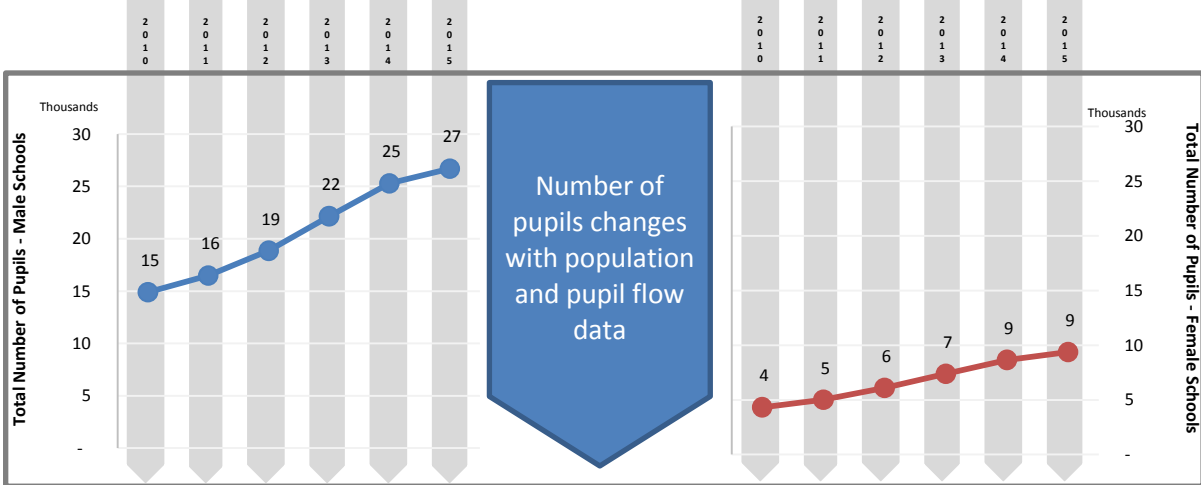
This page is reserved for Department of Education analysis and commentary regarding the contents of the adjacent page.

Data are illustrative only and should not be used for planning purposes

Projected Pupils, Teachers, and Teacher Payroll
Dir Bala - Middle Level

Male Schools

Female Schools



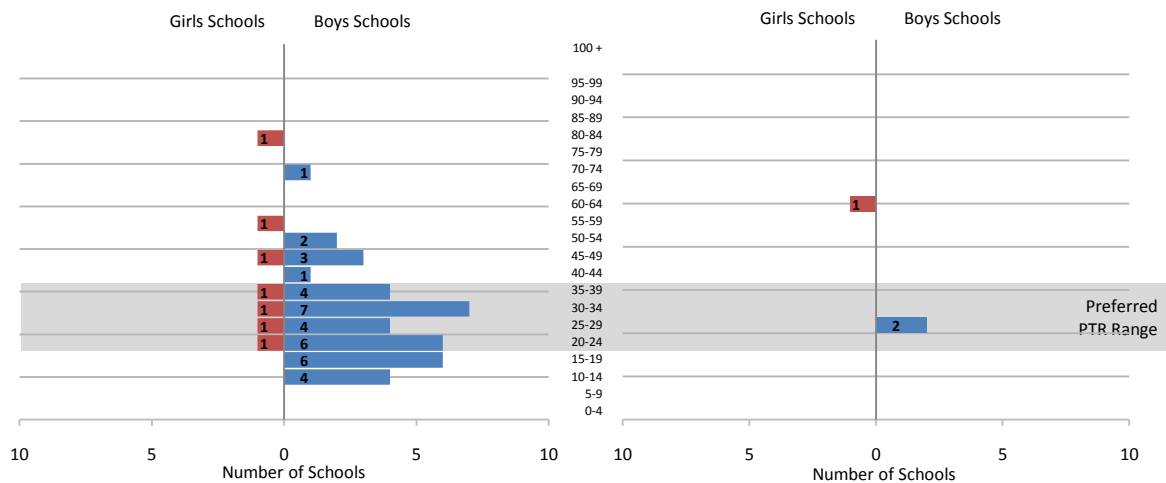
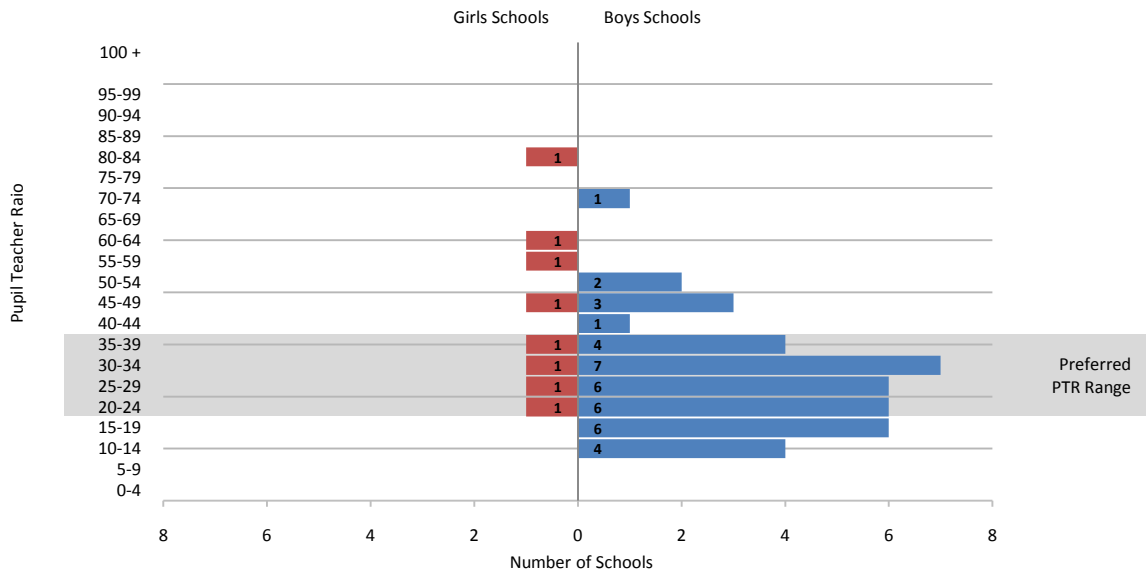
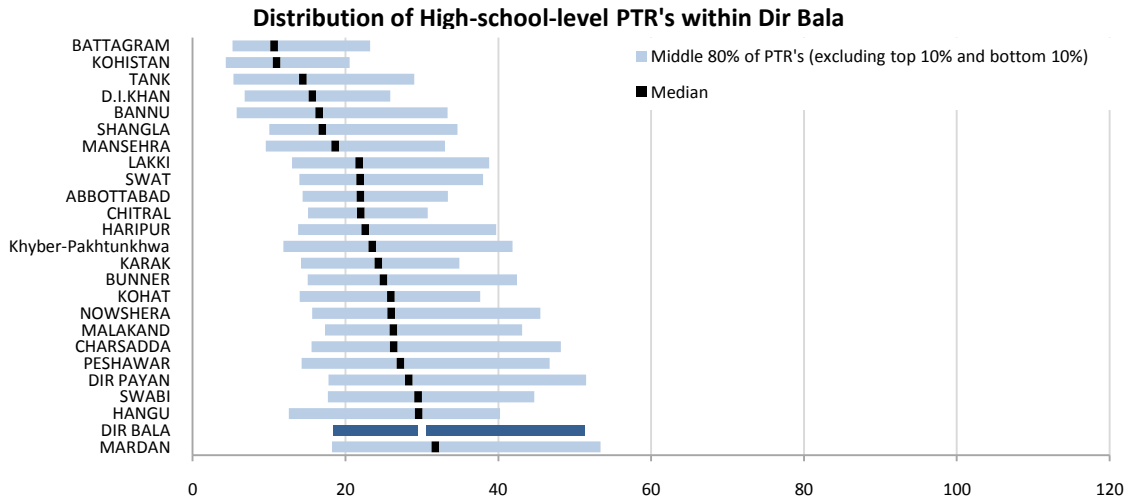
Projected Pupils, Teachers, and Teacher Payroll
Dir Bala - Middle Level

This page is reserved for Department of Education analysis and commentary regarding the contents of the adjacent page.

Projections shown on the adjacent page are based on the default constant-rate scenario. They do not reflect any educated adjustments to the model, and they are not endorsed by the Department of Education.

Data are illustrative only and should not be used for planning purposes

Assessment of Pupil-Teacher Ratios in Dir Bala schools offering high-school-level classes (Includes HS and HSS schools offering high-school-level classes)



Data are illustrative only and should not be used for planning purposes

Assessment of Pupil-Teacher Ratios in Dir Bala schools offering high-school-level classes

(Includes HS and HSS schools offering high-school-level classes)

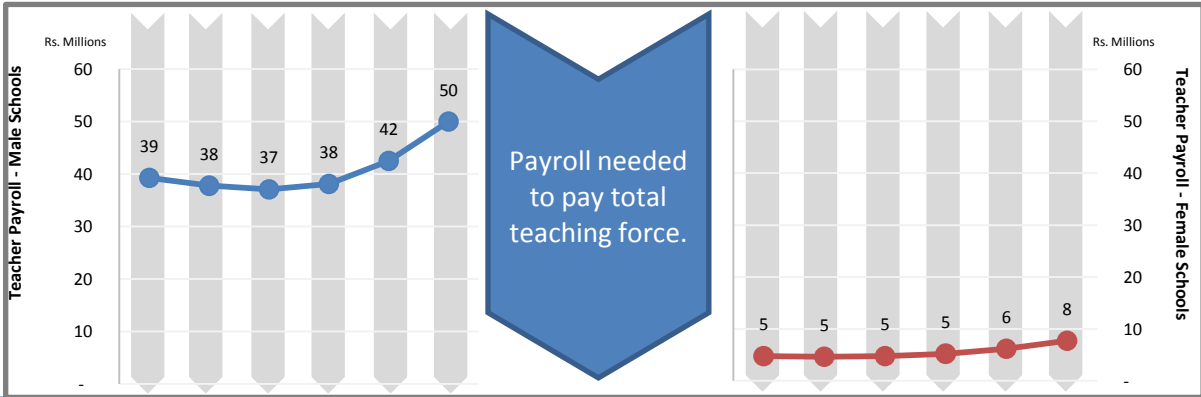
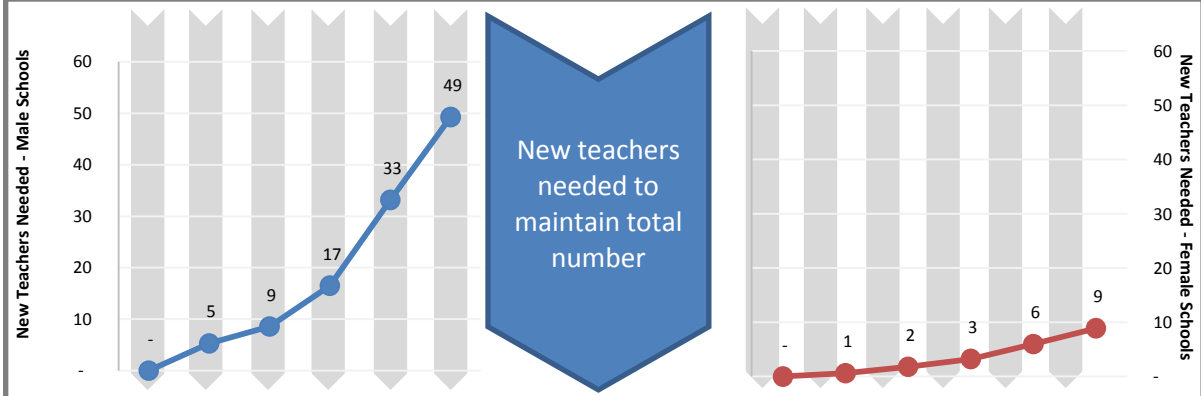
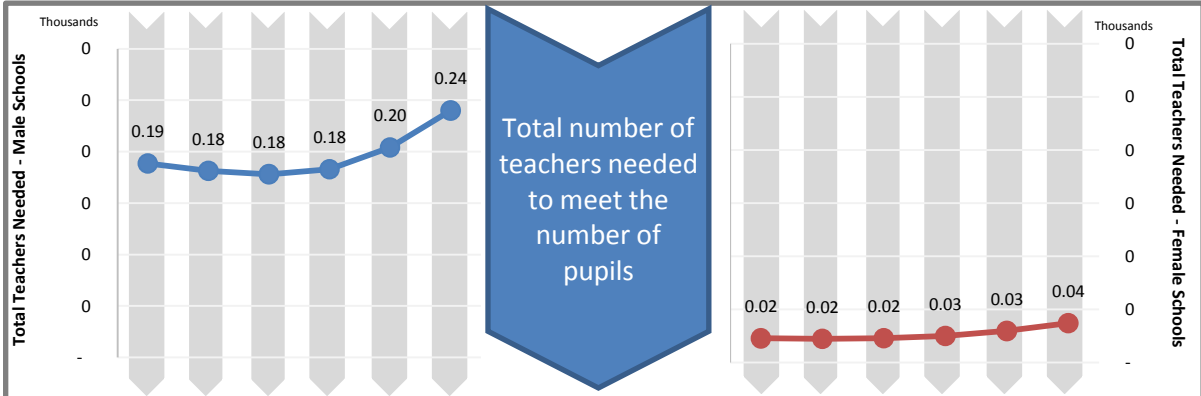
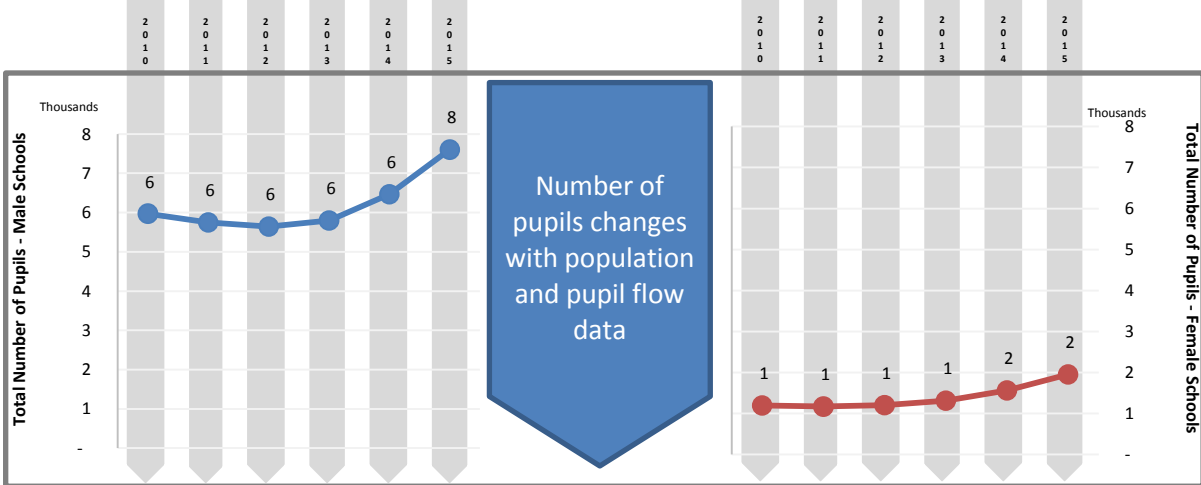
This page is reserved for Department of Education analysis and commentary regarding the contents of the adjacent page.

Data are illustrative only and should not be used for planning purposes

Projected Pupils, Teachers, and Teacher Payroll
Dir Bala - High level

Male Schools

Female Schools



Projected Pupils, Teachers, and Teacher Payroll
Dir Bala - High level

This page is reserved for Department of Education analysis and commentary regarding the contents of the adjacent page.

Projections shown on the adjacent page are based on the default constant-rate scenario. They do not reflect any educated adjustments to the model, and they are not endorsed by the Department of Education.