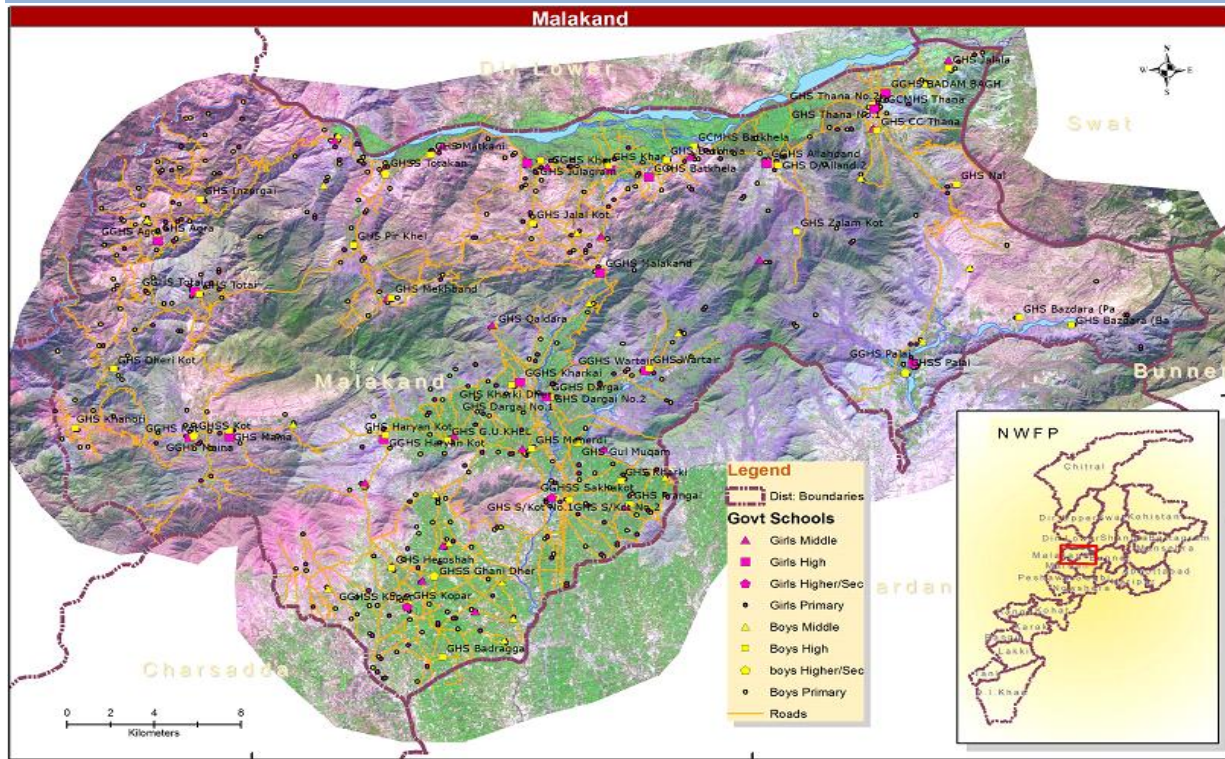


Data are illustrative only and should not be used for planning purposes

# Malakand

Assessment of teacher distribution and need. 2009-2010 through 2014-2015.



**Malakand 2009 - 2010**  
(EMIS Data)

**Malakand 2014 - 2015**  
(Projected Data)

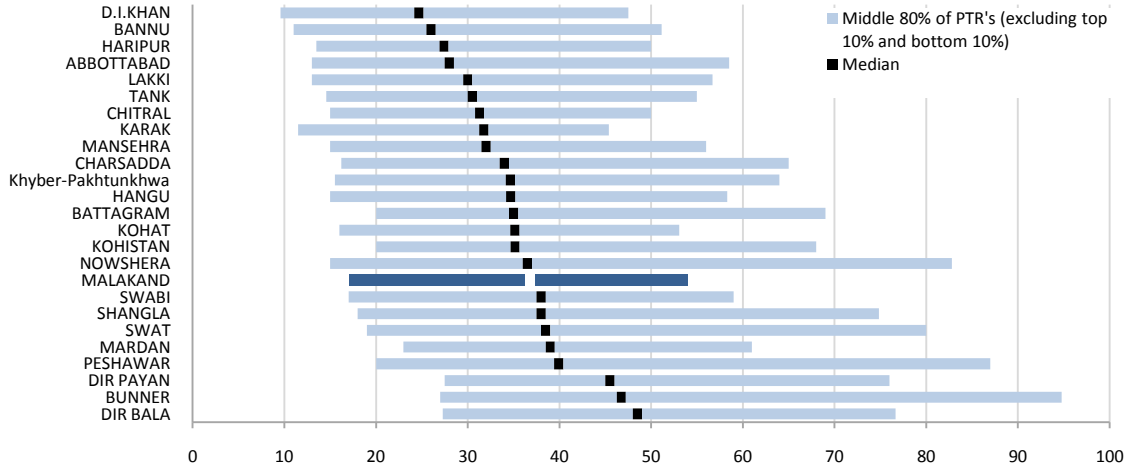
	Primary classes (Kachi - 5)	Middle classes (6 - 8)	High classes (9 - 10)		Primary classes (Kachi - 5)	Middle classes (6 - 8)	High classes (9 - 10)
<b>Boys Schools</b>				<b>Boys Schools</b>			
# Pupils	46,714	14,035	6,941	# Pupils	41,818	14,632	7,000
# Teachers	1,207	637	279	# Teachers	1,080	664	282
PTR	38.7	22.0	24.9	PTR	38.7	22.0	24.9
Payroll (Rs. Millions)	136	83	58	Payroll (Rs. Millions)	122	86	59
<b>Girls Schools</b>				<b>Girls Schools</b>			
# Pupils	28,842	8,286	3,816	# Pupils	25,814	10,166	4,222
# Teachers	799	359	112	# Teachers	715	441	124
PTR	36.1	23.1	34.2	PTR	36.1	23.1	34.2
Payroll (Rs. Millions)	90	47	23	Payroll (Rs. Millions)	81	57	26



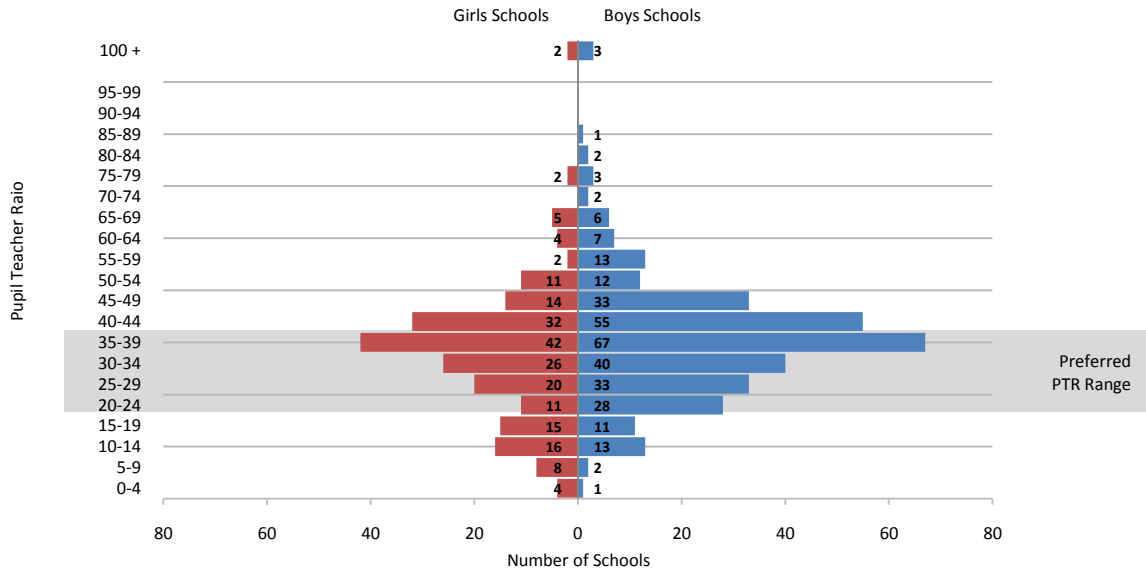
Data are illustrative only and should not be used for planning purposes

## Assessment of Primary School Pupil-Teacher Ratios in Malakand

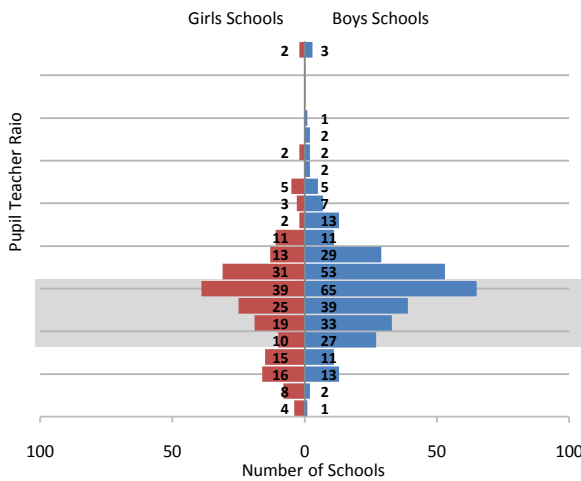
### Distribution of Primary Schools by PTR in Malakand as compared to other districts



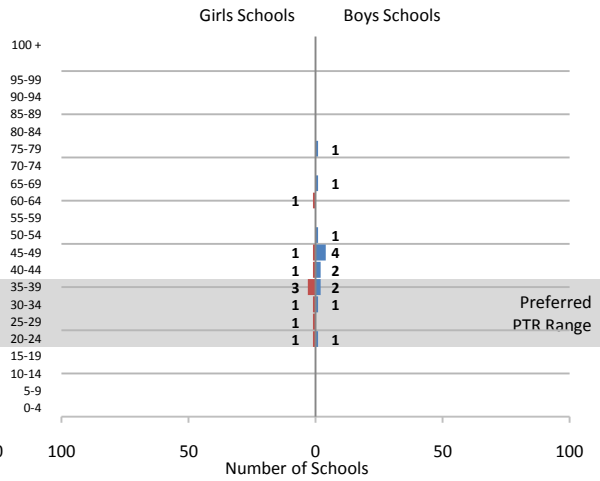
### Distribution of Primary Schools by PTR within Malakand



### Rural Primary Schools



### Urban Primary Schools



**Data are illustrative only and should not be used for planning purposes**

## Assessment of Primary School Pupil-Teacher Ratios in Malakand

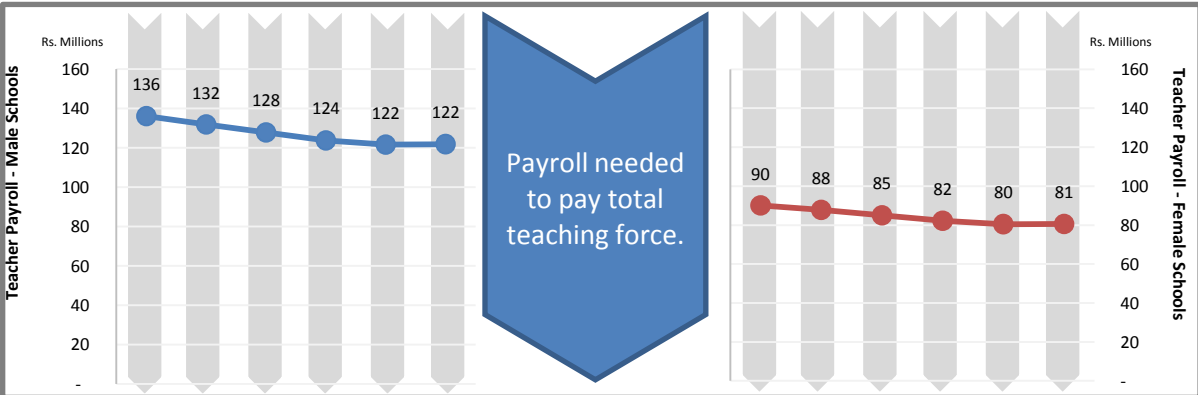
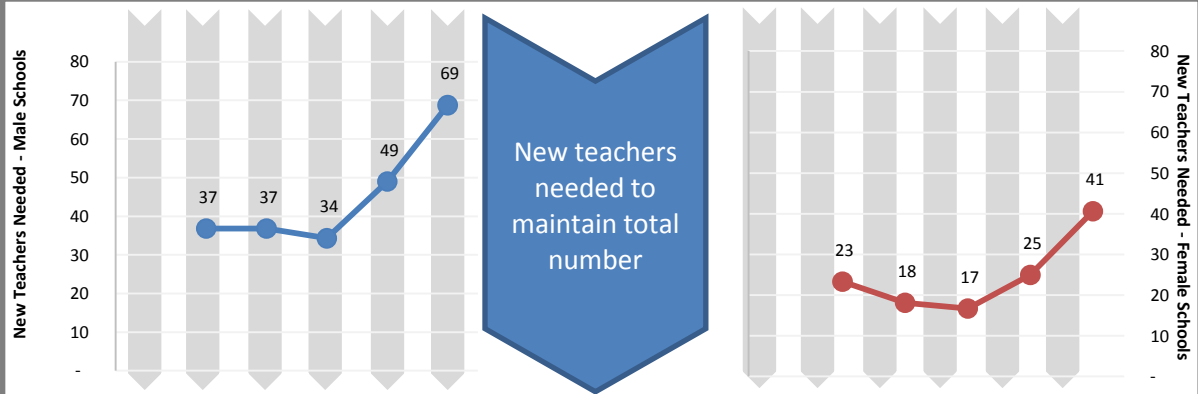
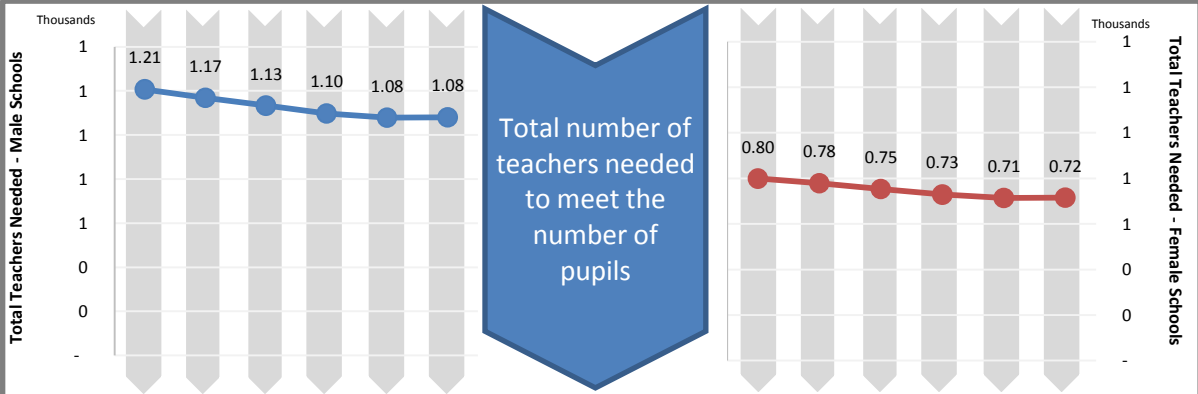
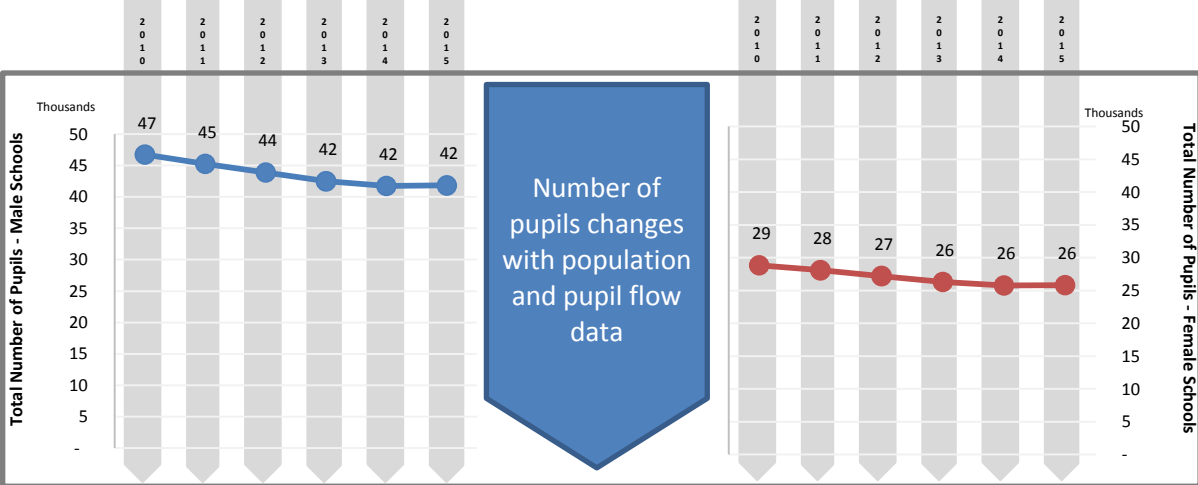
This page is reserved for Department of Education analysis and commentary regarding the contents of the adjacent page.

Data are illustrative only and should not be used for planning purposes

Projected Pupils, Teachers, and Teacher Payroll  
Malakand - Primary Schools

Male Schools

Female Schools



**Data are illustrative only and should not be used for planning purposes**

Projected Pupils, Teachers, and Teacher Payroll  
Malakand - Primary Schools

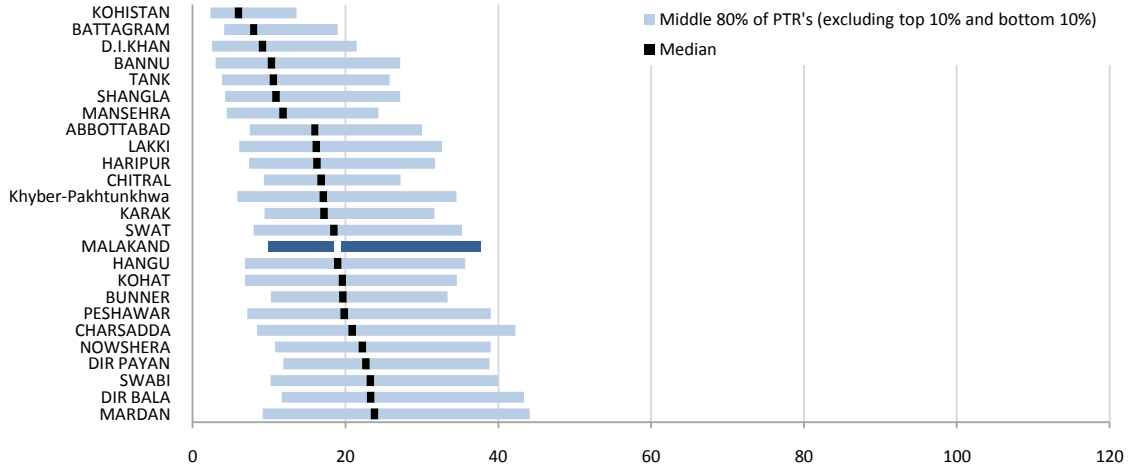
This page is reserved for Department of Education analysis and commentary regarding the contents of the adjacent page.

Projections shown on the adjacent page are based on the default constant-rate scenario. They do not reflect any educated adjustments to the model, and they are not endorsed by the Department of Education.

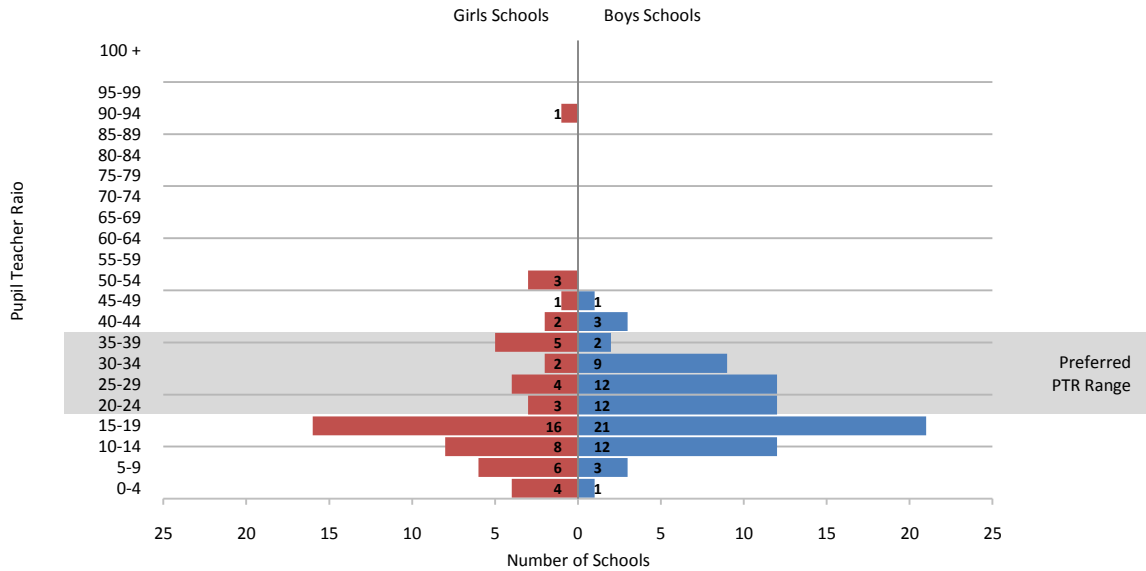
Data are illustrative only and should not be used for planning purposes

## Assessment of Pupil-Teacher Ratios in Malakand schools offering middle-school-level classes (Includes MS, HS, and HSS schools offering middle-level classes)

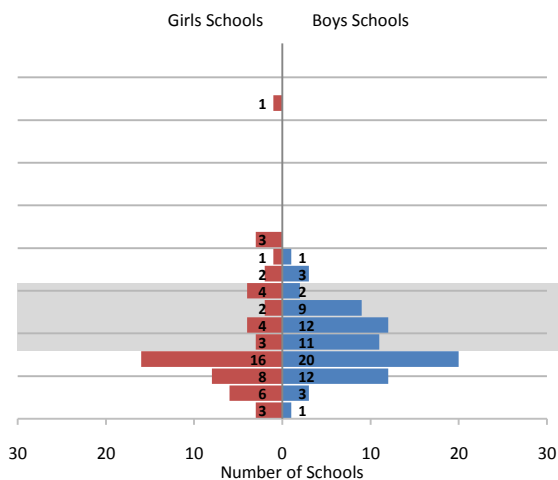
**Distribution of Middle-level PTR's in Malakand as compared to other districts**



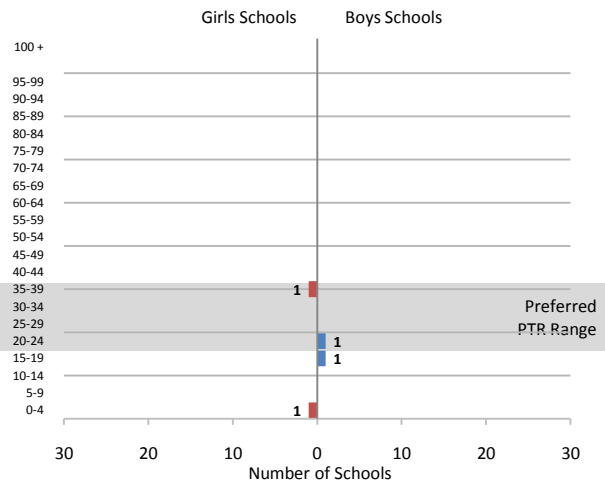
**Distribution of Middle-school-level PTR's within Malakand**



**Rural Middle-school-level PTR's**



**Urban Middle-school-level PTR's**



**Data are illustrative only and should not be used for planning purposes**

**Assessment of Pupil-Teacher Ratios in Malakand schools offering middle-school-level classes**

(Includes MS, HS, and HSS schools offering middle-level classes)

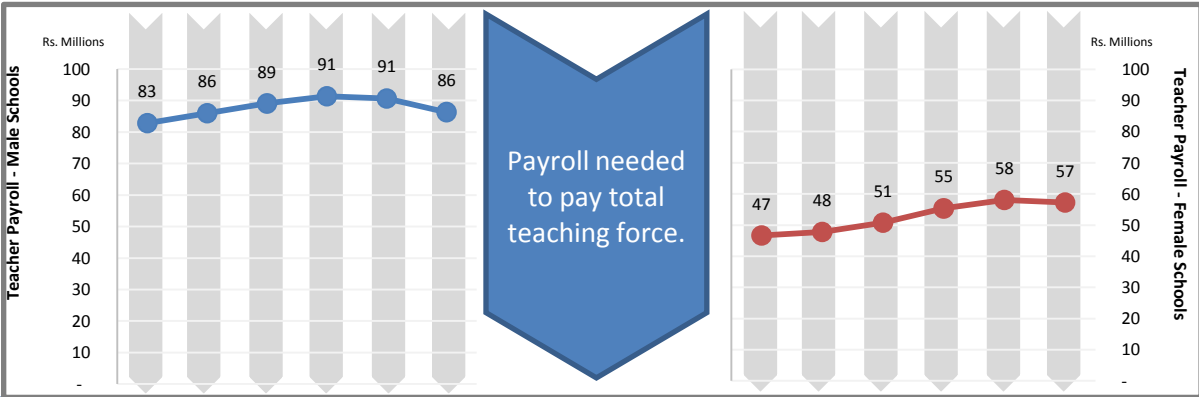
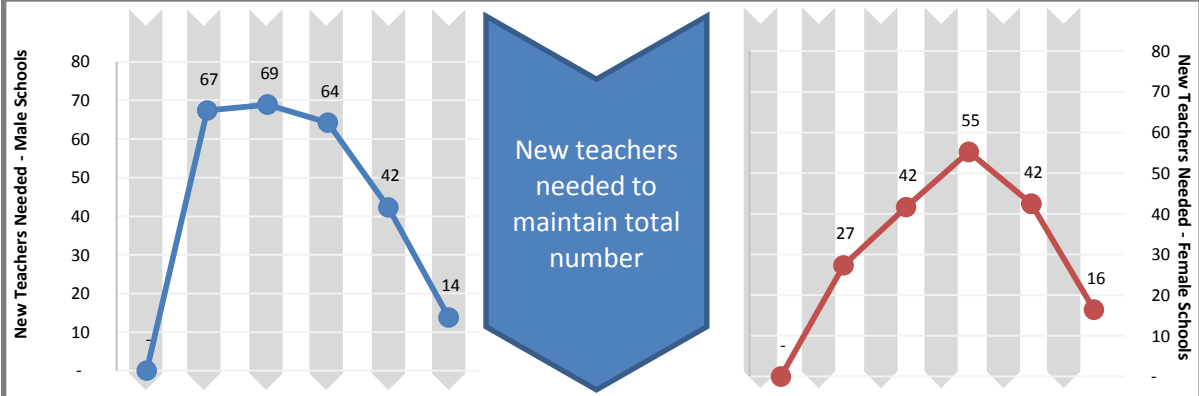
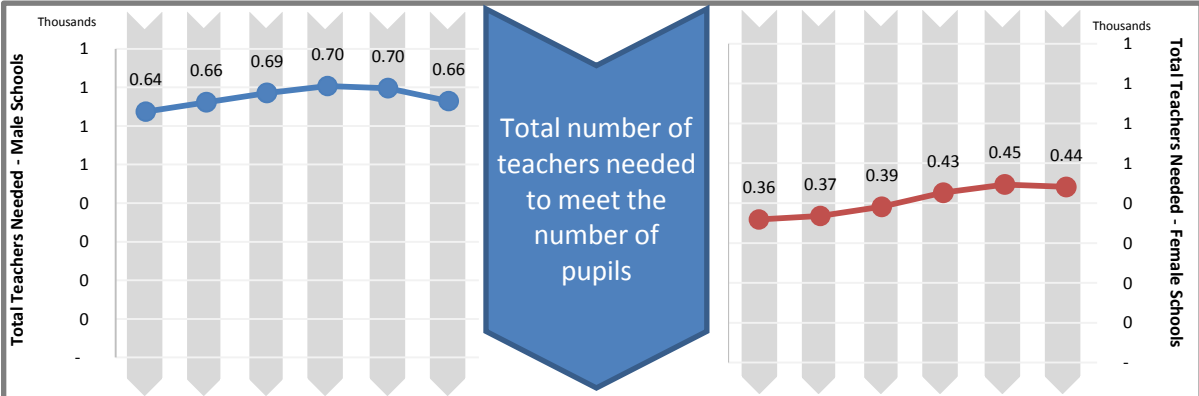
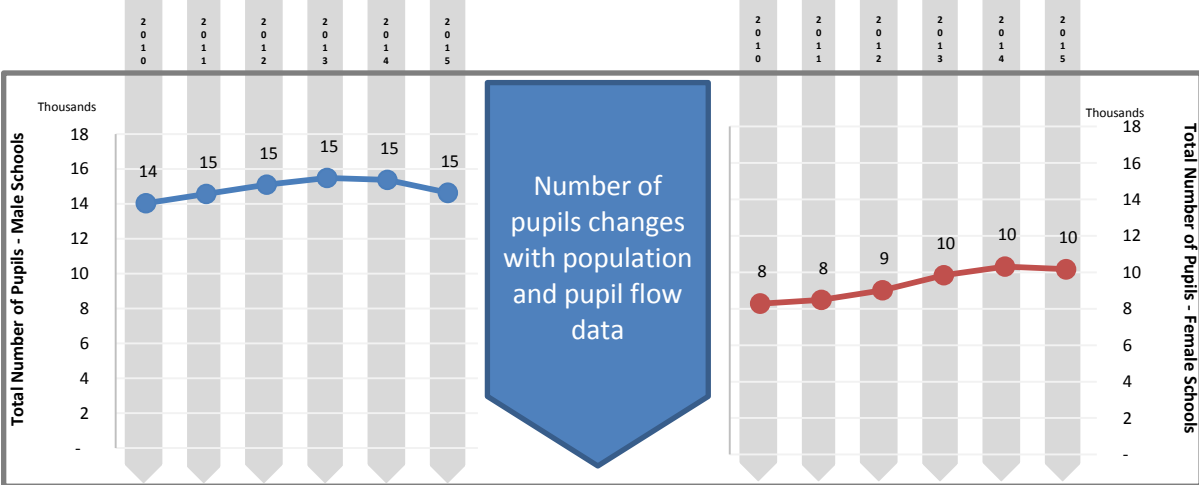
This page is reserved for Department of Education analysis and commentary regarding the contents of the adjacent page.

Data are illustrative only and should not be used for planning purposes

Projected Pupils, Teachers, and Teacher Payroll  
Malakand - Middle Level

Male Schools

Female Schools





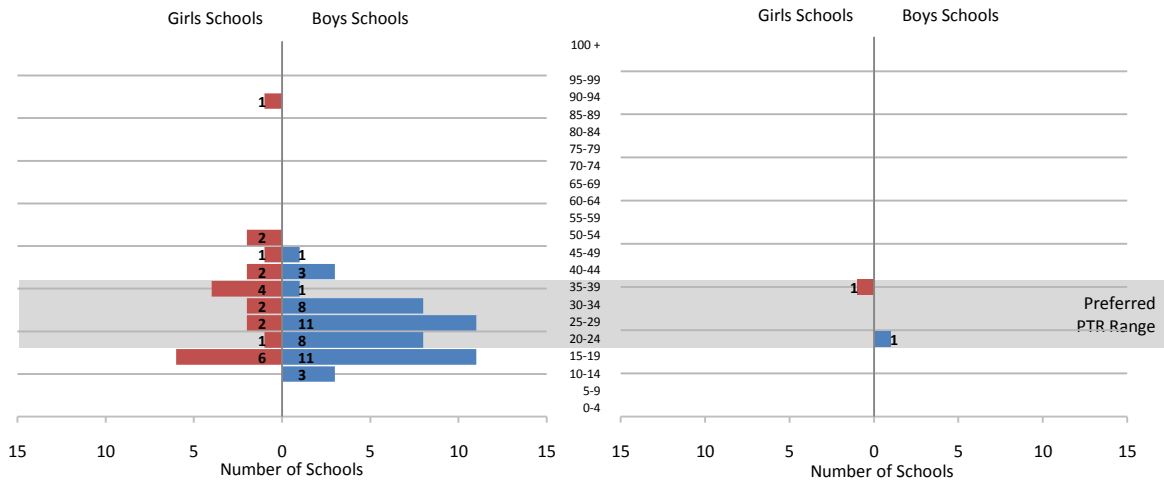
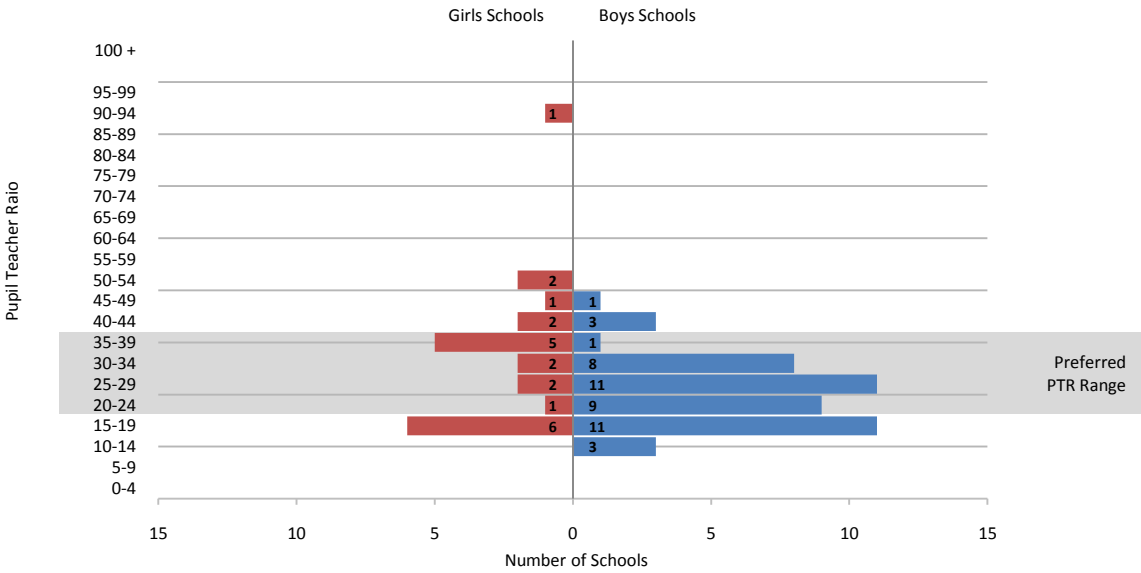
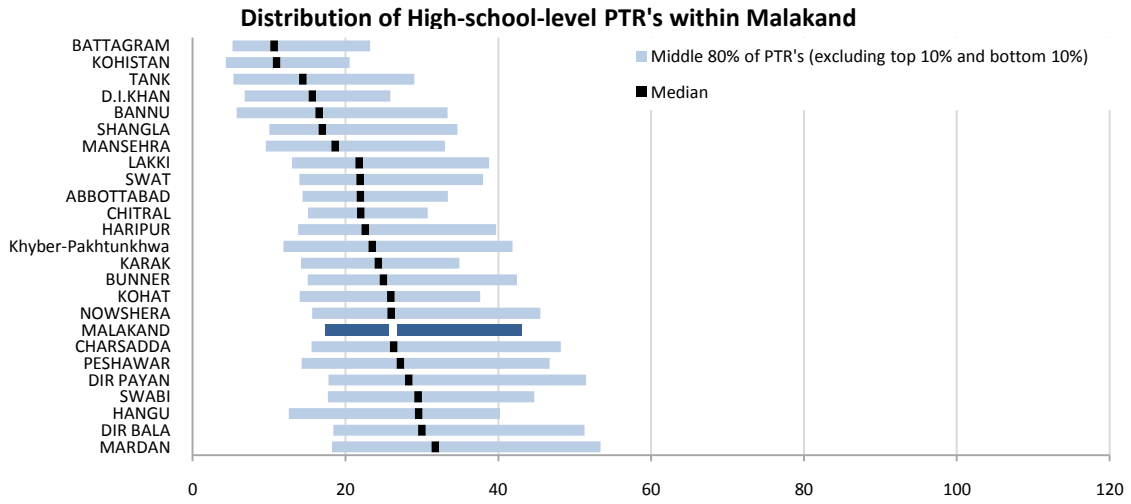
Projected Pupils, Teachers, and Teacher Payroll  
Malakand - Middle Level

This page is reserved for Department of Education analysis and commentary regarding the contents of the adjacent page.

Projections shown on the adjacent page are based on the default constant-rate scenario. They do not reflect any educated adjustments to the model, and they are not endorsed by the Department of Education.

Data are illustrative only and should not be used for planning purposes

**Assessment of Pupil-Teacher Ratios in Malakand schools offering high-school-level classes**  
(Includes HS and HSS schools offering high-school-level classes)



**Data are illustrative only and should not be used for planning purposes**

**Assessment of Pupil-Teacher Ratios in Malakand schools offering high-school-level classes**

*(Includes HS and HSS schools offering high-school-level classes)*

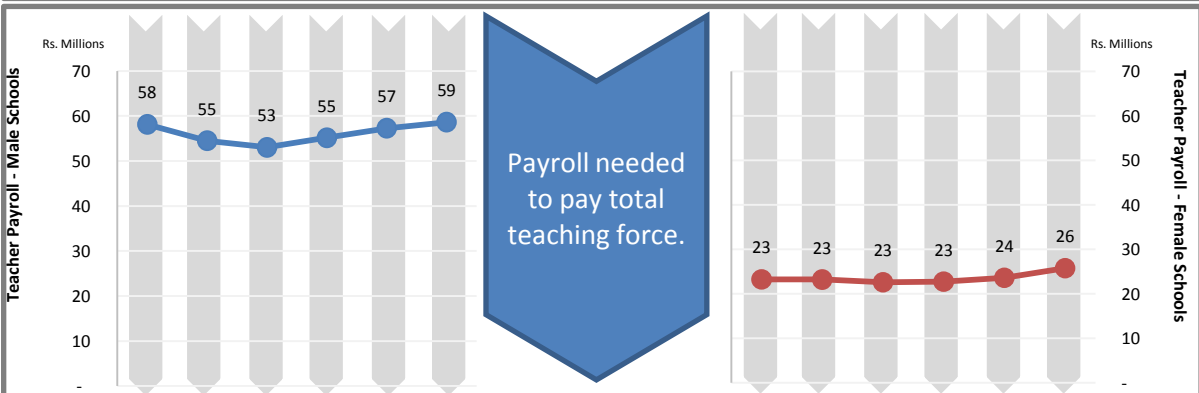
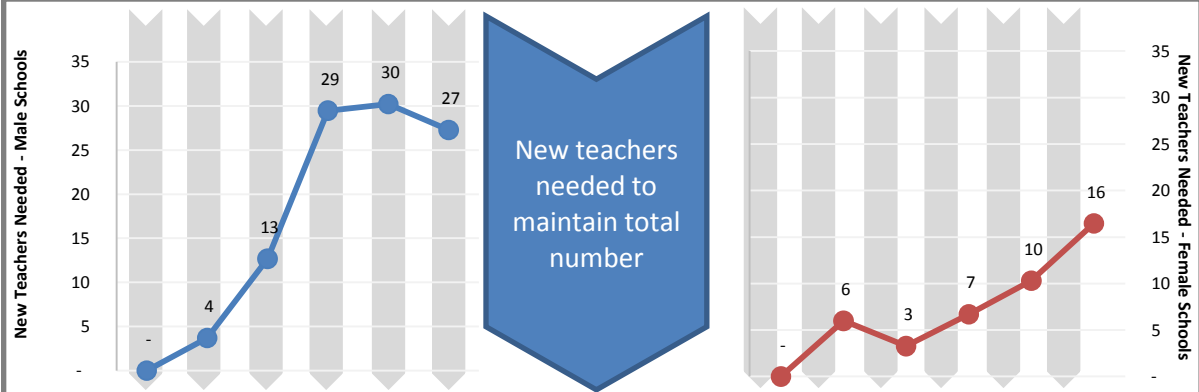
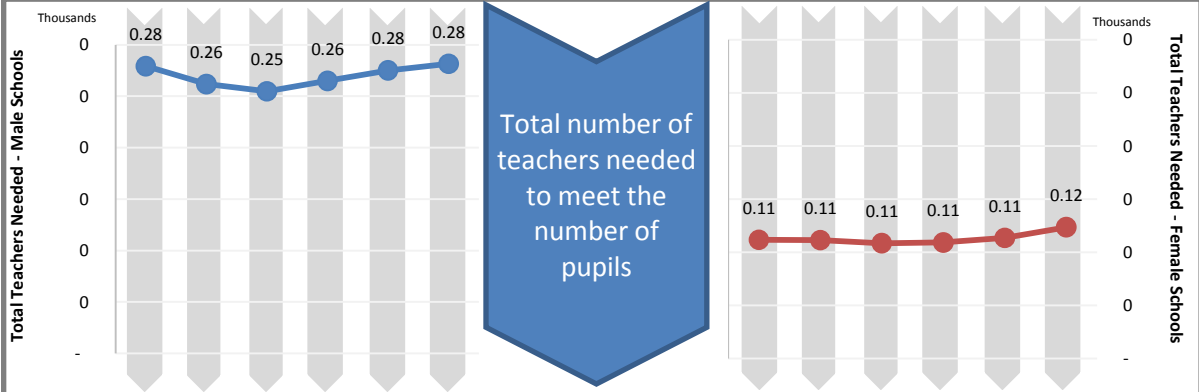
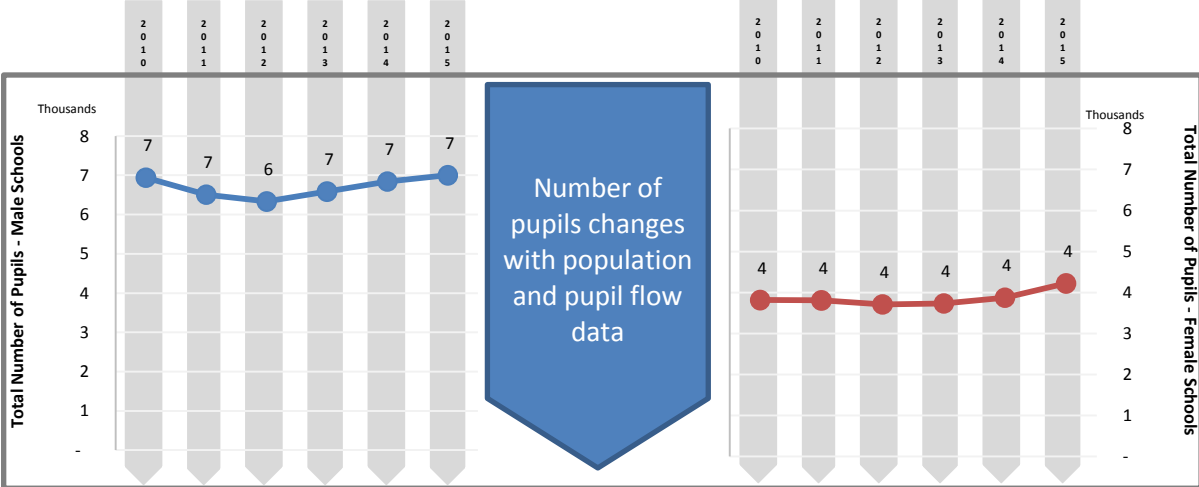
This page is reserved for Department of Education analysis and commentary regarding the contents of the adjacent page.

Data are illustrative only and should not be used for planning purposes

Projected Pupils, Teachers, and Teacher Payroll  
Malakand - High level

Male Schools

Female Schools



**Data are illustrative only and should not be used for planning purposes**

Projected Pupils, Teachers, and Teacher Payroll  
Malakand - High level

This page is reserved for Department of Education analysis and commentary regarding the contents of the adjacent page.

Projections shown on the adjacent page are based on the default constant-rate scenario. They do not reflect any educated adjustments to the model, and they are not endorsed by the Department of Education.