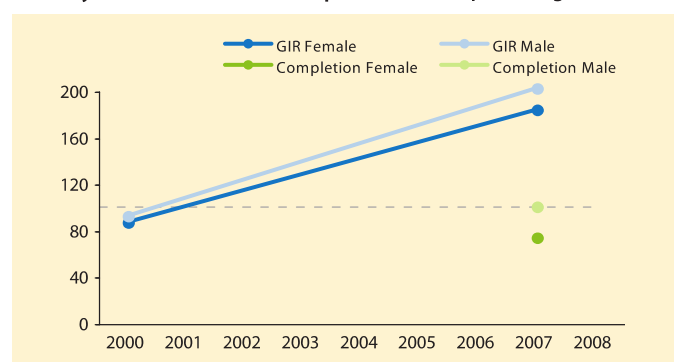
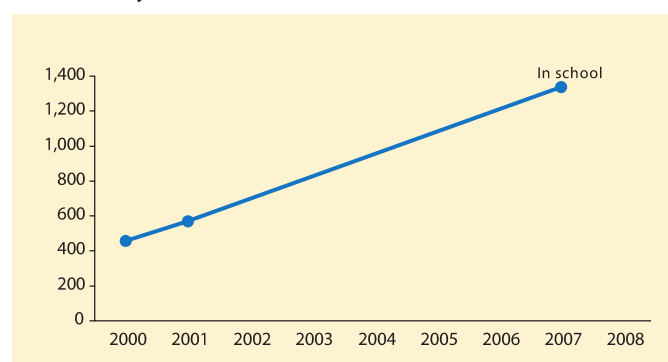


Primary Gross Intake and Completion Rates (percentage)



Source: UNESCO Institute for Statistics

Total Primary Enrollment and Children Out of School (thousands)

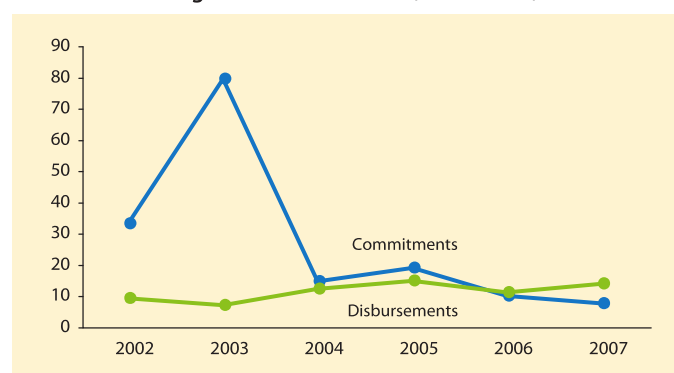


Source: UNESCO Institute for Statistics

Education Indicators	2000	2001	2002	2003	2004	2005	2006	2007	2008
Education share of recurrent budget (%)	—	—	—	—	20	18	19	—	—
Public education expenditure as a % of GDP	4.9	4.6	4.7	4.6	4.2	3.8	—	—	—
Share of primary education in recurrent education budget (%)	—	—	—	52	49	51	49	—	—
Primary net enrollment rate	95	94	92	—	—	—	—	—	—
Primary pupil teacher ratio	—	37	—	—	—	61	60	44	—
Percentage of repeaters in primary (female)	—	—	—	—	—	—	—	10	—
Percentage of repeaters in primary (male)	—	—	—	—	—	—	—	10	—
Primary dropout rate (female)	—	—	—	—	—	—	—	—	—
Primary dropout rate (male)	—	—	—	—	—	—	—	—	—
Transition rate from primary to secondary (male)	—	—	—	—	—	—	—	—	—
Transition rate from primary to secondary (female)	—	—	—	—	—	—	—	—	—

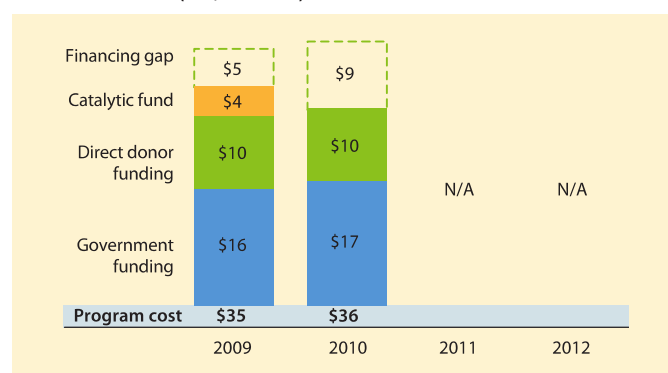
Source: UNESCO Institute for Statistics (normal font) and FTI Country Reports (bold). — : Data not available

External Financing for Basic Education (US\$ millions)



Source: OECD/DAC CRS online database

Projected Program Cost and Financing Gap for Primary/Basic Education (US\$ millions)



Source: Education for All Fast Track Initiative Secretariat; based on country documents. N/A: Data not available.

Education Official Development Assistance* (US\$ millions)	Commitments						Disbursements					
	2002	2003	2004	2005	2006	2007	2002	2003	2004	2005	2006	2007
Education (total)	34.7	87.6	23.0	34.7	14.6	16.8	11.7	11.5	20.5	24.9	19.7	24.9
—Basic education	32.7	79.0	14.2	18.5	9.4	7.2	8.8	6.5	11.8	14.4	10.7	13.5
—Secondary education	0.7	3.6	4.4	7.7	2.1	7.1	3.5	3.5	6.7	8.5	7.7	8.9
—Post-secondary education	1.4	5.0	4.4	8.5	3.1	2.5	3.7	4.1	5.7	7.1	5.9	5.7
Education ODA per capita (US\$)	7.6	18.4	4.6	6.8	2.8	3.1	2.6	2.4	4.1	4.9	3.7	4.6
Basic ed. ODA per primary-aged child (US\$)	48.5	112.8	19.4	24.1	11.7	8.6	13.8	10.1	17.6	20.6	14.6	17.5

Source: OECD/DAC CRS Online database and World Bank

* All values given in constant 2007 US\$ millions unless single dollars specified. Disbursement data for Finland in 2004 and 2005 and for Luxembourg in 2002 and 2003 are not available. Basic education ODA includes 50% of Education ODA amounts not allocated by level and 10% of amounts allocated to general budget support. Secondary and Post-secondary education ODA each includes 25% of the amounts not allocated by level and 5% of amounts allocated to general budget support. Total Education ODA figures include the amounts for the three levels above and a notional 20% of general budget support received by the country (therefore amounts by levels don't add up to total education amounts).